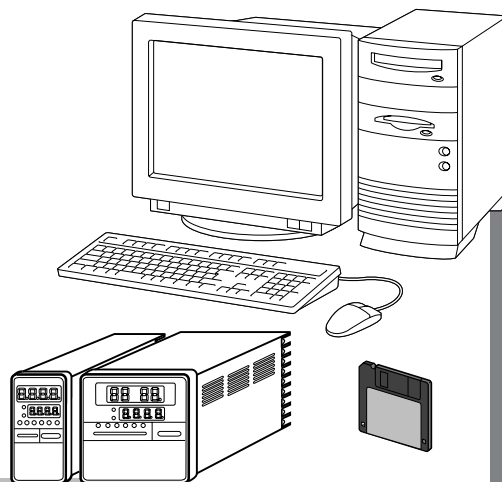


# Smart Loader Package SLP-C20/C30 for Digital Indicating Controller SDC20/21, SDC30/31 User's Manual



Thank you for purchasing the Smart Loader Package SLP-C20/30 for Digital Indicating Controller SDC20/21, SDC30/31. This manual contains information for ensuring correct use of the SLP-C20/30. It also provides necessary information for installation, maintenance, and troubleshooting.

This manual should be read by those who design and maintain devices that use the SLP-C20/30.

Be sure to keep this manual nearby for handy reference.

Yamatake Corporation

---

---

## RESTRICTIONS ON USE

---

---

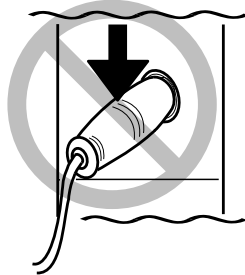
This product has been designed, developed and manufactured for general-purpose application in machinery and equipment. Accordingly, when used in applications outlined below, special care should be taken to implement a fail-safe and/or redundant design concept as well as a periodic maintenance program.

- Safety devices for plant worker protection
- Start/stop control devices for transportation and material handling machines
- Aeronautical/aerospace machines
- Control devices for nuclear reactors

Never use this product in applications where human safety may be put at risk.

### IMPORTANT

Do not apply a strong force while connecting a loader plug. Failure to do so might damage the instrument.



### ! Handling Precautions

Application of excessive force to the loader plug might cause communication failure. If such failure happens, reconnect the loader plug correctly.

### REQUEST

---

---

Ensure that this User's Manual is handed over to the user before the product is used.

Copying or duplicating this User's Manual in part or in whole is forbidden. The information and specifications in this User's Manual are subject to change without notice.

Considerable effort has been made to ensure that this User's Manual is free from inaccuracies and omissions.

If you should find any inaccuracies or omissions, please contact Yamatake Corporation.

In no event is Yamatake Corporation liable to anyone for any indirect, special or consequential damages as a result of using this product.

---

---

©2001 Yamatake Corporation ALL RIGHTS RESERVED

The DIGITRONIK® is registered trademarks of Yamatake Corporation. Other company names and product names listed in this manual are registered trademarks or trademarks of respective companies.



# Unpacking

Check the following items when removing the SLP-C20/C30 from its package:

1. Check the model No. to make sure that you have received the product that you ordered.
2. Check the SLP-C20/C30 for any apparent physical damage.
3. Check the contents of the package against the Package List to make sure that all accessories are included in the package.

After unpacking, handle the SLP-C20/C30 and its accessories taking care to prevent damage or loss of parts.

If an inconsistency is found or the package contents are not in order, immediately contact your dealer.

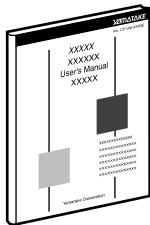
| Name  | Model No.  | Q'ty | Remarks   |
|---|--|------|---|
| System disk<br>    | SLP-C20J20 for SDC20/21<br>SLP-C30J20 for SDC30/31 | 1    | Floppy disk<br>3.5 inch disk (1.44MB)   |
| Special cable   | -  | 1    |   |
| User's Manual<br> | CP-UM-5161/E                                       | 1    | This manual.<br>This manual is the common manual of the SLP-C20 and the SLP-C30.<br>The manual is written in both Japanese and English. |

# The Role of This Manual

In all, 5 manuals have been prepared for the SDC20/21, SDC30/31. Read the manual according to your specific requirements.

The following lists all the manuals that accompany the SDC20/21, SDC30/31 and gives a brief outline of the manual:

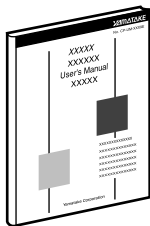
If you do not have the required manual, contact Yamatake Corporation or your dealer.



## **SDC20/21 Digital Indicating Controller User's Manual** **Manual No. CP-UM-1470E**

This manual is required reading for those who use the SDC20/21, those who design hardware for integrating the SDC20/21 into operator control panels, those who carry out maintenance, and those who operate instruments in which the SDC20/21 is integrated.

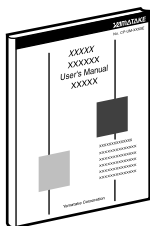
It describes how to install and wire the SDC20/21 for integrating into instruments, method of operation, maintenance and inspection, troubleshooting, and hardware specifications.



## **SDC30/31 Digital Indicating Controller User's Manual** **Manual No. CP-UM-1586E**

This manual is required reading for those who use the SDC30/31, those who design hardware for integrating the SDC30/31 into operator control panels, those who carry out maintenance, and those who operate instruments in which the SDC30/31 is integrated.

It describes how to install and wire the SDC30/31 for integrating into instruments, method of operation, maintenance and inspection, troubleshooting, and hardware specifications.

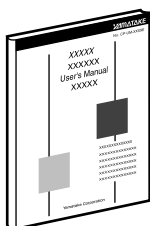


## **DIGITRONIK CPL Communications Manual SDC20/21** **Manual No. CP-UM-1572E**

The SDC20/21 can communicate with other equipment via the RS-485 or RS-232C interfaces.

This manual is required reading for those who use the CPL communication functions of the SDC20/21.

It briefly describes CPL communications, how to wire the SDC20/21, communication procedures, communication data for the SDC20/21, troubleshooting and communication specifications.

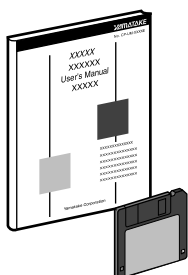


## **DIGITRONIK CPL Communications Manual SDC 30/31** **Manual No. CP-UM-1589E**

The SDC30/31 can communicate with other equipment via the RS-485 interfaces.

This manual is required reading for those who use the CPL communication functions of the SDC30/31.

It briefly describes CPL communications, how to wire the SDC30/31, communication procedures, communication data for the SDC30/31, troubleshooting and communication specifications.



**Smart Loader Package SLP-C20/C30 for Digital Indicating Controller  
SDC20/21, SDC30/31 User's Manual                      Manual No.CP-UM-5161E**

This manual.

This manual is supplied with the Smart Loader Package SLP-C20/C30. The manual describes the software used to make various settings for SLP-C20/C30 using a personal computer. Personnel in charge of design or setting of a system using SLP-C20/C30 must thoroughly read this manual. The manual describes installation of the software into a personal computer, operation of the personal computer, various functions, and setup procedures.

# Organization of This User's Manual

---

This manual is organized as follows:

## Chapter 1. INTRODUCTION

Be sure to read this chapter before you start using the Smart Loader Package.

This chapter describes the required operating environment for the personal computer and briefly introduces its features.

## Chapter 2. INSTALLATION AND BASIC FUNCTIONS

This chapter describes how to install, start up and quit the Smart Loader Package, its functions, screen configurations and basic operations.

## Chapter 3. OPERATION

This chapter describes how to operate the loader for setup and configuration of this software.

## Chapter 4. TROUBLESHOOTING

This chapter describes error messages that are displayed when trouble occurs, and how to remedy trouble.

# Conventions Used in This Manual


---

The following conventions are used in this manual:

### Handling Precautions :

Handling Precautions indicate items that the user should pay attention to when handling the SLP-C20/C30.

 **Note** : Notes indicate useful information that the user might benefit by knowing.

 : This indicates the item or page that the user is requested to refer to.

(1), (2), (3) : The numbers with the parenthesis indicate steps in a sequence or indicate corresponding parts in an explanation.

[OK] button : Indicates a selection button in screens displayed on the personal computer.

[Option] : Indicates messages and menus displayed on the personal computer.  
[Type Setting]

[Option] → [Type Setting] : Indicates the order to select the [Option] first and then select the [Type Setting] displayed on the personal computer.

>> : Indicates the result of an operation, details displayed on the personal computer or devices, or the state of a device after an operation.

[Ctrl] key, [X] key : Indicates keys on the keyboard.

[Ctrl]+[X] key : Indicates the operation of pressing the [X] key with the [Ctrl] key on the keyboard held down.

# Contents

---

|                                    |  |
|------------------------------------|--|
| Unpacking                          |  |
| The Role of This Manual            |  |
| Organization of This User's Manual |  |
| Conventions Used in This Manual    |  |

## Chapter 1. INTRODUCTION

|     |                              |    |
|-----|------------------------------|----|
| 1-1 | Outline of the SLP           | E1 |
| 1-2 | System Operating Environment | E2 |
| ■   | Hardware                     | E2 |
| ■   | Hardware configuration       | E3 |
| ■   | Compatible equipment         | E3 |

## Chapter 2. INSTALLATION AND BASIC FUNCTIONS

|     |  |    |
|-----|--|----|
| 2-1 | Installation, Starting Up and Quitting SLP | E4 |
| ■   | Starting up SLP                            | E6 |
| ■   | Quitting SLP                               | E6 |
| 2-2 | Description of Functions                   | E7 |
| ■   | SLP functions                              | E7 |
| 2-3 | Screen Configuration                       | E8 |
| ■   | SLP screen configuration                   | E8 |
| 2-4 | Menu Configuration List                    | E9 |
| ■   | SLP-C20                                    | E9 |
| ■   | SLP-C30                                    | E9 |

## Chapter 3. OPERATION

|     |  |     |
|-----|--|-----|
| 3-1 | Setting Up Options                                       | E10 |
| ■   | Setting the type   | E10 |
| 3-2 | Setting the Environment                                  | E11 |
| 3-3 | Key Assignment   | E12 |
| 3-4 | File Operations  | E13 |
| ■   | Making new files   | E13 |
| ■   | Opening existing files                                   | E13 |
| ■   | Overwriting and saving files                             | E13 |
| ■   | Saving files with a new name                             | E14 |
| ■   | Outputting CSV format files                              | E14 |
| 3-5 | Communications with the SDC                              | E15 |
| ■   | Communicating to the SLP from the SDC (reading to SLP)   | E15 |
| ■   | Communicating to the SDC from the SLP (writing from SLP) | E15 |
| 3-6 | Setting Up Data  | E16 |
| ■   | Selecting setup items                                    | E16 |
| ■   | Entering numerical data                                  | E16 |
| 3-7 | Mode Change (SLP-C30)                                    | E18 |
| ■   | Change the mode of SDC30/31 (SLP-C30)                    | E18 |

---

## Chapter 4. TROUBLESHOOTING

- Communications error messages ..... E19
- File error messages ..... E19
- Startup error messages ..... E19

# Chapter 1. INTRODUCTION

## 1 - 1 Outline of the SLP

---

The SLP-C20/C30 (simply called "SLP" from here on) is an engineering tool for the DigitroniK Line SDC20/SDC30 Digital Indicating Controller (simply called "SDC" from here on).

The SLP runs on Windows95/98/Me/2000/XP (simply called "Windows" from here on) on a personal computer.

The SLP has the following functions:

1. Parameter setup
2. Communications with SDC (reading/writing of parameters)
3. File operations (reading/writing of parameters)

The SDC which can be set up with each SLP is as the following.

| Model No. of SLP | Model No. of SDC |
|------------------|------------------|
| SLP-C20          | SDC20/21         |
| SLP-C30          | SDC30/31         |

### Note

- Install SLP on the hard disk following the procedure in "2-1 Installing SLP". Use the system disk that you have purchased as the backup system.

### Handling Precautions

- These disks do not contain the system, and cannot be used as they are.

# 1 - 2 System Operating Environment

The following system environment is required for using the SLP:

## ■ Hardware

| Item               | Description      |  |
|--------------------|------------------|--|
| Personal Computer  | Target model     | PC/AT compatibles with a Pentium chip or higher  |
|                    | Memory           | 32M byte or more   |
|                    | Operating system | Windows95/98/Me/2000/XP  |
| Peripheral Devices | Display          | 800 X 600 dot or more, 16 bit color or more  |
|                    | Serial port      | 9-pin, serial port, 1ch or more *  |
|                    | Hard disk drive  | Hard disk with at least 40M byte of free space   |
|                    | Foppy disk drive | At least 1 drive capable of reading the floppy disk in the product package (1.44MB format) |
|                    | Pointing device  | Windows-compatible mouse or equivalent device  |

\* : Serial port

It is recommended to use a personal computer with 9-pin serial port built-in. If your personal computer does not have any serial port, you may use any of the extension adaptors listed below to connect the loader cable.

However, note that the operation may become unstable depending on the personal computer environment.

- Special interface (port replicater)

Adaptor specially designed for each personal computer (special adaptor for each personal computer model)

- CF card adaptor

CF232 manufactured by Elan Digital systems

URL: <http://www.elandigitalsystems.com/interface/cf232.php>

Operation confirmed personal computer, IBM's ThinkPad A31

REX-CF60 manufacture by RATOOC.

URL: <http://www.ratocsystems.com/products/subpage/cf60.html> (Japanese)

- USB adaptor

USB-RSAQ3 manufactured by I/O Data

URL: <http://www.iodata.jp/prod/mobile/serial/2004/usb-rsaq3/> (Japanese)

Operation confirmed personal computer, IBM's ThinkPad A31

When connecting the USB cable, check the port No.

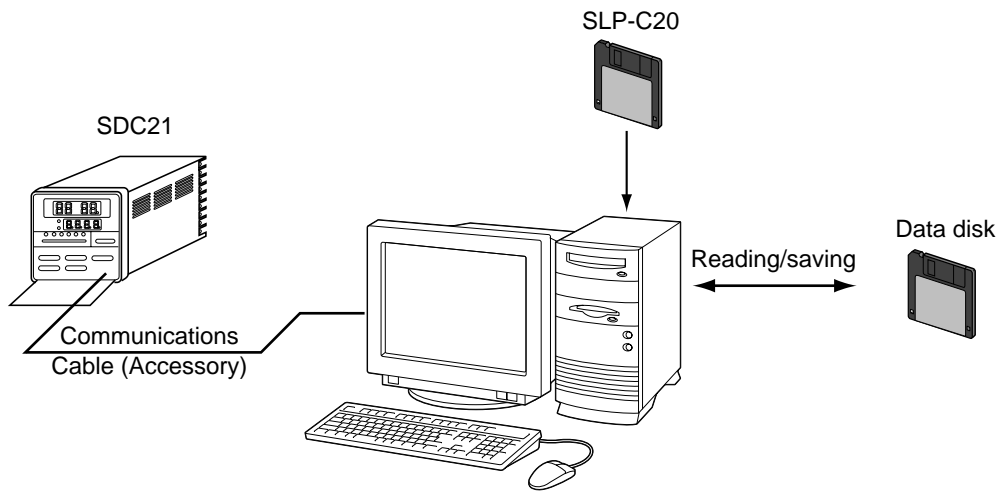
The port No. may vary depending on the USB cable connection position.

## ! Handling Precautions

- Before using the print function, make sure that your printer can be operated.
- Before starting up SLP, quit all other applications.  
If you start up SLP while another application is running, SLP may malfunction.

## ■ Hardware configuration

\* Wiring example in communications with the SDC21.



## ■ Compatible equipment

| Manufacturer | Model No.        |
|--------------|------------------|
| Dell         | OptiPlex Gxi5200 |
| Dell         | OptiPlex GX5166  |
| Fujitsu      | FMV-5166T3       |

# Chapter 2. INSTALLATION AND BASIC FUNCTIONS

## 2 - 1 Installation, Starting Up and Quitting SLP

This section describes how to install the SLP on a personal computer.

### Handling Precautions

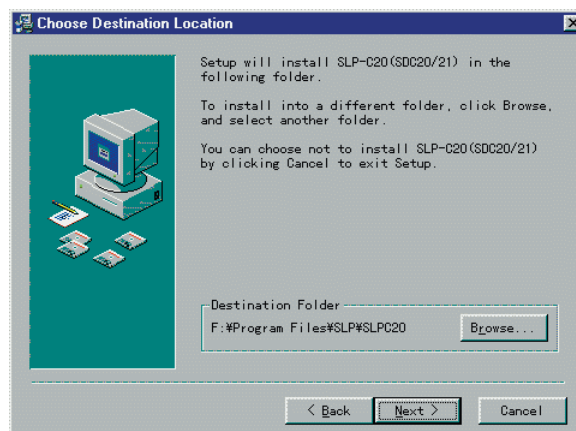
- If you start up the Installer while another application is running, the Installer may malfunction.  
Remove other resident applications from their directories before starting up the Installer.  
The SLP sometimes cannot be started up depending on the combination of other applications and drivers.  
For details on Windows and personal computer settings, refer to the User's Manuals provided with Windows and the personal computer.

### ● Installing SLP

1. Click the [Start]button at the bottom of the screen, and then click [Run...].
2. Enter the message of [A:\setup].
3. Insert the disk provided with the software package into the disk drive, click [OK]button.  
>>The Installer is started.



4. Click [Next>]button.



### Note

- To change the installation destination directory, click [Browse...]button.
5. Click [Next>]button.

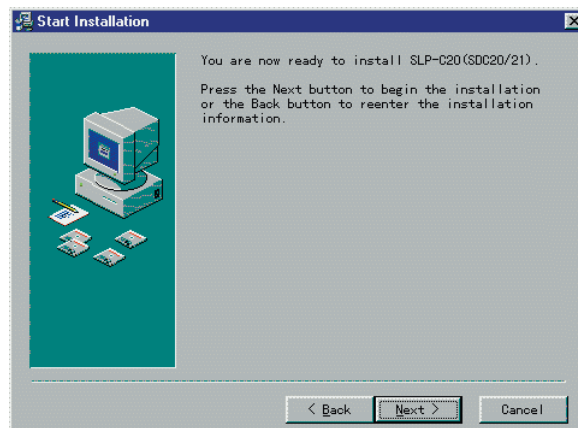
>>The following screen appears:



**Note**

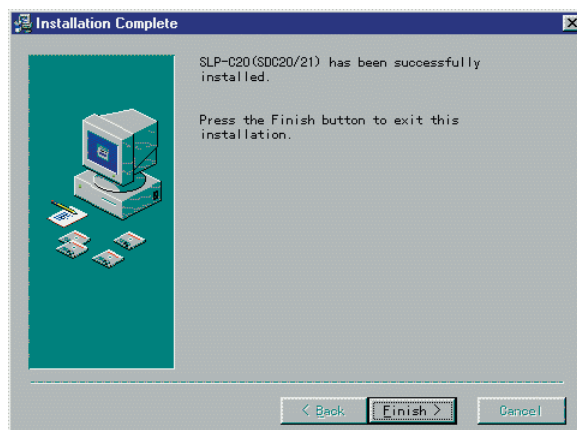
- To change the program folder, enter the new folder name.

6. Click [Next>]button.



7. Click [Next>]button.

>>When installation ends normally, the following screen appears:

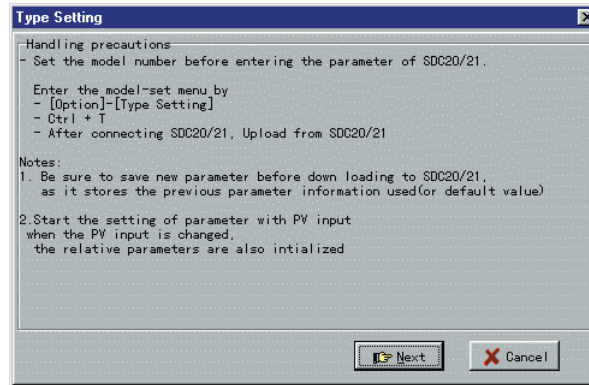


8. Click [Finish>]button.

>>The installer is finished.

## ■ Starting up SLP


1. Click [Start] button at the bottom of the screen, and click the SLP-C□□□ (SDC□□□□) under [Programs] → [SLP].  
>>The SLP is started up, and the opening screen appears.  
>>The menu window is displayed.

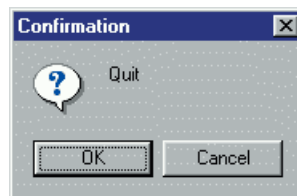


### Note

For details on the operating system and the mouse you are using, refer to the User's Manual provided with Windows.

## ■ Quitting SLP

1. Click  button at the top right of the screen.  
The operation is the same by selecting the [File] → [Quit] command.  
>>The following screen appears:



2. Click [OK] button.

## 2 - 2 Description of Functions

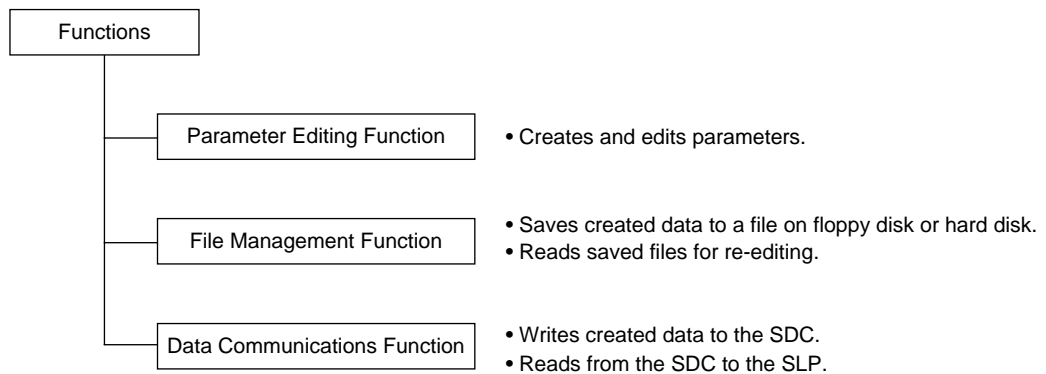
---

### ■ SLP functions

The SLP is provided with the following functions for configuring SDC functions:

- Parameter Editing Function
- File Management Function
- Data Communications Function

The figure below shows operations available by these functions.



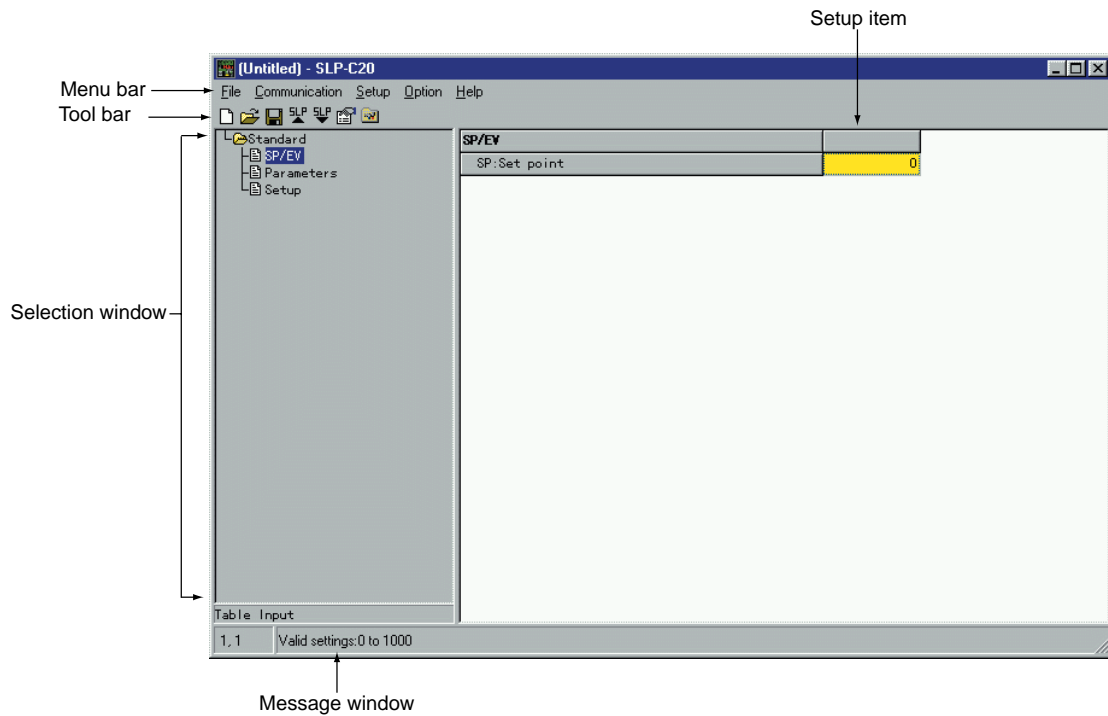
### Note

- “One file” refers to data for one SDC. Each file comprises the various parameter settings and the model number information.

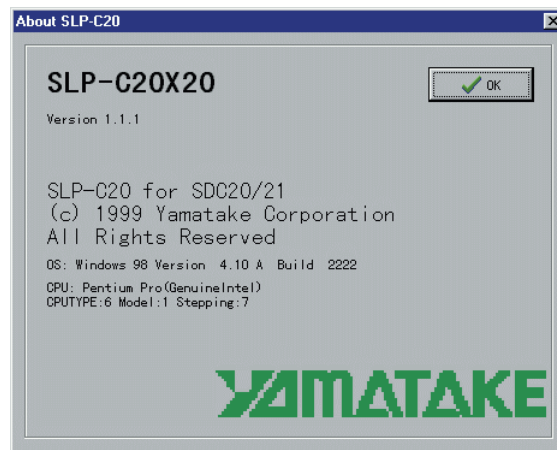
## 2 - 3 Screen Configuration

### ■ SLP screen configuration

#### ● Basic SLP screen










#### ● Dialog box displayed when [Help] → [Version] is selected










## 2 - 4 Menu Configuration List

### ■ SLP-C20

| Menu          | Icon  | Sub Menu 1              | Sub Menu 2 | Description                           | Shortcut keys |
|---------------|---|-------------------------|------------|---------------------------------------|---------------|
| File          |  | New                     |            | Creates a new data                    | Ctrl+N        |
|               |  | Open                    |            | Opens a existing file                 | Ctrl+O        |
|               |  | Save                    |            | Saves the active data                 | Ctrl+S        |
|               | -   | Save As                 |            | Saves the active data with a new name | Ctrl+A        |
|               | -   | CSV Out (X)             |            | Saves the active data in CSV format   | Ctrl+X        |
|               | -   | Quit                    |            | Quits the application                 | Ctrl+Q        |
| Communication |  | Read (SDC20/21 to SLP)  |            | Reads the data from the device        | Ctrl+R        |
|               |  | Write (SLP to SDC20/21) |            | Writes the data to the device         | Ctrl+W        |
| Setup         | -   | Standard                | SP/EV      | Displays the SP/EV.                   | Ctrl+Shift+A  |
|               |   |                         | Parameters | Displays the parameters               | Ctrl+Shift+B  |
|               |   |                         | Setup      | Displays the setup                    | Ctrl+Shift+C  |
| Option        |  | Type Setting            |            | Setting the type                      | Ctrl+T        |
|               |  | Environment Setting     |            | Setting the environment               | Ctrl+E        |
|               | -   | Para Key Assignment     |            | Changes the para key assignment       | -             |
| Help          | -   | Version                 |            | Displays the version information      | -             |

### ■ SLP-C30

| Menu          | Icon  | Sub Menu 1              | Sub Menu 2       | Description                           | Shortcut keys |
|---------------|---|-------------------------|------------------|---------------------------------------|---------------|
| File          |  | New                     |                  | Creates a new data                    | Ctrl+N        |
|               |  | Open                    |                  | Opens a existing file                 | Ctrl+O        |
|               |  | Save                    |                  | Saves the active data                 | Ctrl+S        |
|               | -   | Save As                 |                  | Saves the active data with a new name | Ctrl+A        |
|               | -   | CSV Out (X)             |                  | Saves the active data in CSV format   | Ctrl+X        |
|               | -   | Quit                    |                  | Quits the application                 | Ctrl+Q        |
| Communication |  | Read (SDC20/21 to SLP)  |                  | Reads the data from device            | Ctrl+R        |
|               |  | Write (SLP to SDC20/21) |                  | Writes the data to the device         | Ctrl+W        |
| Setup         | -   | Standard                | SP/EV            | Displays the SP/EV.                   | Ctrl+Shift+A  |
|               |   |                         | PID              | Displays the PID                      | Ctrl+Shift+B  |
|               |   |                         | Dist.control Pid | Displays the disturbance control PID  | Ctrl+Shift+C  |
|               |   |                         | Parameters       | Displays the parameters               | Ctrl+Shift+D  |
|               |   |                         | Zone setting     | Displays the zone setting             | Ctrl+Shift+E  |
|               |   |                         | Setup            | Displays the setup                    | Ctrl+Shift+F  |
| Mode          | Mode  |                         |                  | Changes the Mode                      | Ctrl+M        |
| Option        |  | Type Setting            |                  | Setting the type                      | Ctrl+T        |
|               |  | Environment Setting     |                  | Setting the environment               | Ctrl+E        |
|               | -   | UF Key Assignment       |                  | Changes the UF Key assignment         | -             |
| Help          | -   | Version                 |                  | Displays the version information      | -             |

# Chapter 3. OPERATION

## 3 - 1 Setting Up Options

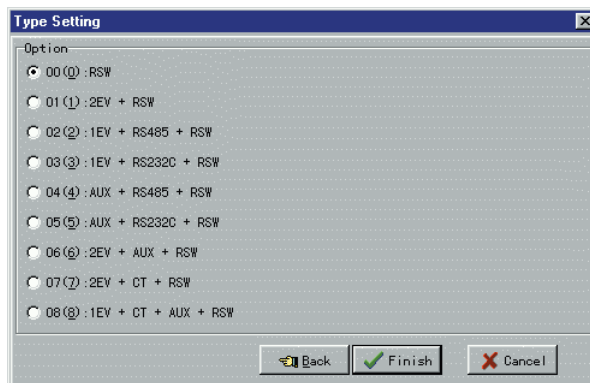
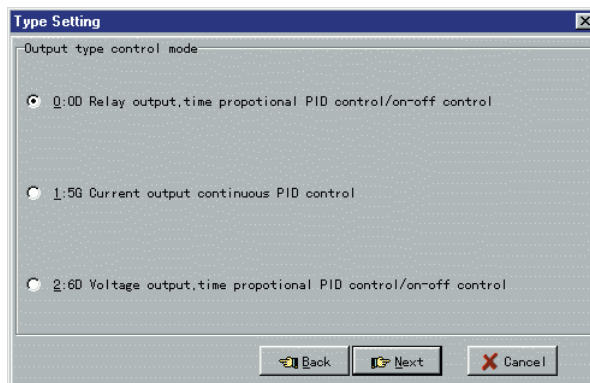
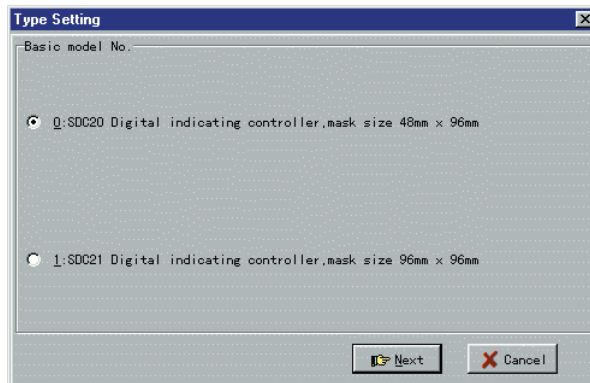
### ■ Setting the type


First, set the SLP type matched to the SDC model No.

1. Click  icon.

The operation is the same by selecting the [Option] → [Type Setting] command or the [Ctrl]+[T] keys.

>>The Type Setting dialog box appears.



2. Set the basic model No., output type control mode and option.
3. Select the desired setting from each of the selection items.
4. Click [Finish]button.

### Handling Precautions

- The model No. you set here is for internal use by the SLP.
- Set up the Model No. and options of the SDC which it tries to set up on the Type Setting screen of the SLP before you set up parameters of the SDC.
- The model No. of the SDC does not change even if the type is changed on the SLP.

## 3 - 2 Setting the Environment

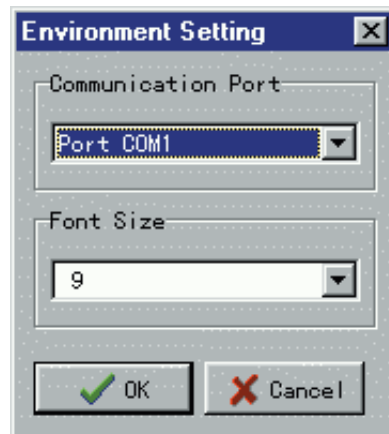
---


Set the communications port and font on the personal computer.

1. Click  icon.

The operation is the same by selecting the [Option] → [Environment Setting] command or the [Ctrl]+[E] keys.

>>The Environment Setup dialog box appears.



2. Set the communications port.  
Select the various settings.
3. Set the font size.  
Select the various settings.
4. Click [OK] button.

### Handling Precautions

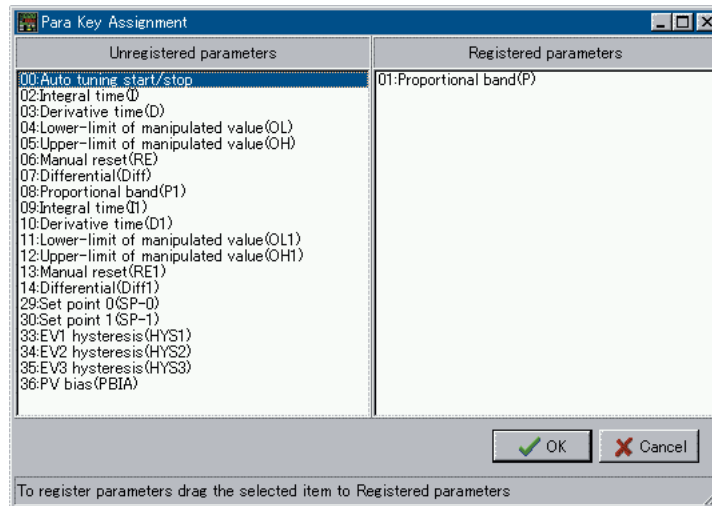
- Normally, use “Port COM1”.  
Even if another communications port can be selected, it sometimes cannot be used depending on its shape of connector.

## 3 - 3 Key Assignment

Assign the PARA key of SLP-C20. (Assign the UF key in SLP-C30.)

Select the [Option] → [Para Key Assignment] command.

>>The Para key assignment dialog box appears.



### ● Assign the parameter

Drag the parameters to be registered out of the items in the Unregistered parameters to the Registered parameters. Registration can be canceled by double-clicking the selected item or by pressing the [space] key.

### ● Cancel the parameter

Drag the parameters to be canceled out of the items in the Registered parameters to the Unregistered parameters. Registration can be canceled by double-clicking the selected item or by pressing the [space] key.

## 3 - 4 File Operations

### ■ Making new files

1. Click  icon.

The operation is the same by selecting the [File] → [New] command or the [Ctrl]+[N]keys.

>>The New dialog box appears.

2. Click [OK]button.

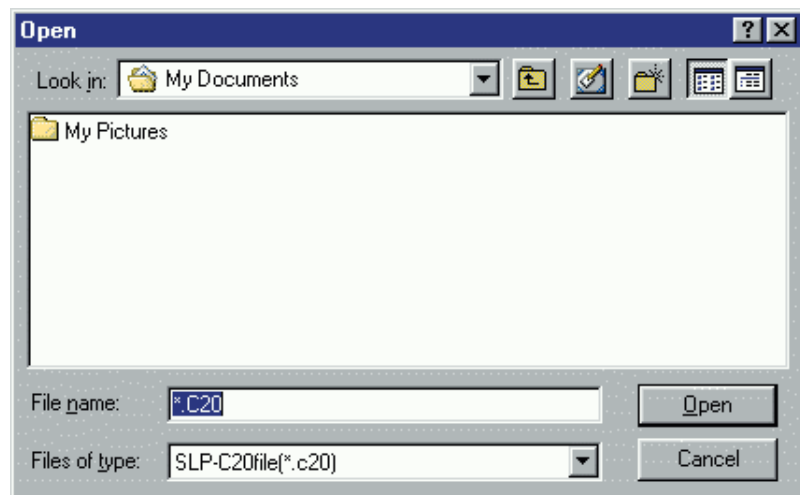
>>A new file opens.

### ■ Opening existing files

1. Click  icon.

The operation is the same by selecting the [File] → [Open] command or the [Ctrl]+[O]keys.

>>The opens dialog box appears.



2. Select the folder name in [Look in:].

3. Click (select) the file name.

4. Click [Open]button.

>>The file having the name that you set opens.

### ■ Overwriting and saving files

1. Click  icon.

The operation is the same by selecting the [File] → [Save] command or the [Ctrl]+[S]keys.

>>The file is overwritten and saved.

---

## ■ Saving files with a new name

1. Select the [File] → [Save As] command.  
The operation is the same by selecting the [Ctrl]+[A]keys.  
>>The Save As dialog box appears.
2. Select the folder name under [Save in].
3. Enter the file name to [File name].
4. Click [Save]button.  
>>The file is saved under the file name that you set.

### Note

- The file is overwritten and saved when you click (select) the file name at the file name window.

## ■ Outputting CSV format files

1. Select the [File] → [CSV Out] command.  
The operation is the same by selecting the [Ctrl]+[X]keys.  
>>The CSV Output dialog box appears.
2. Select the folder name under [Save in].
3. Enter the file name to [File name].
4. Click [Save]button.  
>>The file is output under the file name that you set.

### Note

- The file is overwritten and saved when you click (select) the file name at the file name window.  
A CSV format file is a text file delimited by commas, and can be used in Microsoft Excel or other off-the-shelf spreadsheet applications.

## 3 - 5

# Communications with the SDC

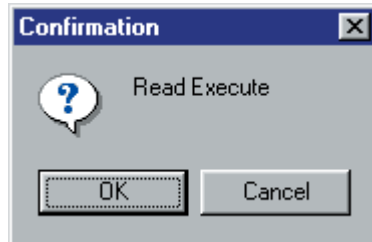
---

### ■ Communicating to the SLP from the SDC (reading to SLP)

1. Click  icon.

The operation is the same by selecting the [Comunications] → [Read(SDC→SLP)] command or the [Ctrl]+[R]keys.

>>The Confirm dialog box appears.



2. Click [OK]button.  
>>Reading to the SLP starts.

### ■ Communicating to the SDC from the SLP (writing from SLP)

1. Click  icon.

The operation is the same by selecting the [Comunications] → [Write(SLP→SDC)] command or the [Ctrl]+[E]keys.

>>The Confirm dialog box appears.

2. Click [OK]button.  
>>Writing to the SDC starts.

#### Handling Precautions

- If the type set on the SLP does not match the SDC model No., the Warning dialog box appears on the screen.

## 3 - 6 Setting Up Data

---

### ■ Selecting setup items

#### ● Moving the highlight section on the display by operating the keyboard

1. Press the [→], [←], [↑] or [↓] key to move the highlighted section on screen.

#### ● Moving the highlight section on the display by operating the mouse

2. Click the section you want to move.
3. Click the scroll bar to scroll the screen.  
>>The screen cannot be scrolled beyond the topmost or bottommost rows on screen.

#### ● Changing operation windows

1. Press the [Tab] key.  
>>The screen moves to the target operation window.



#### Note

- Setup items are moved in order on screen.

### ■ Entering numerical data

#### ● Entering numerical values

- To enter a numerical value  
Press the [0] to [9] keys on the keyboard.
- To enter a hexadecimal value  
Press the [0] to [9] keys and the [A] to [F] keys on the keyboard.
- To enter a decimal point  
Press the [.] key at the desired decimal point position.
- To enter a minus value  
Press the [-] key.
- To cancel a wrong entry  
Press the [Back Space] key.  
>>The currently displayed value is deleted.
- To cancel the currently entered numerical value  
Press the [Esc] key.  
>>Original set value is redisplayed.

#### ● Select the setup item

Entering numerical data by the [0] to [9] keys to select the setup item.

1. Select the setup item to highlight it.
2. Enter the desired set value by the [0] to [9] keys.
3. Press the [Enter] key.

The operation is the same by pressing the [↑] or [↓] key.

>>The set value is fixed.

### Note

- After you have fixed the numerical value by pressing the [↑] or [↓]key, the highlight section moves on screen.
- When you have moved a setup item using the mouse, the set value is not fixed.
- When a set value is invalid, the original set value is redisplayed.
- To cancel a set value midway during entry, press the [Esc]key before you fix the set value.

## ● Selecting and entering data

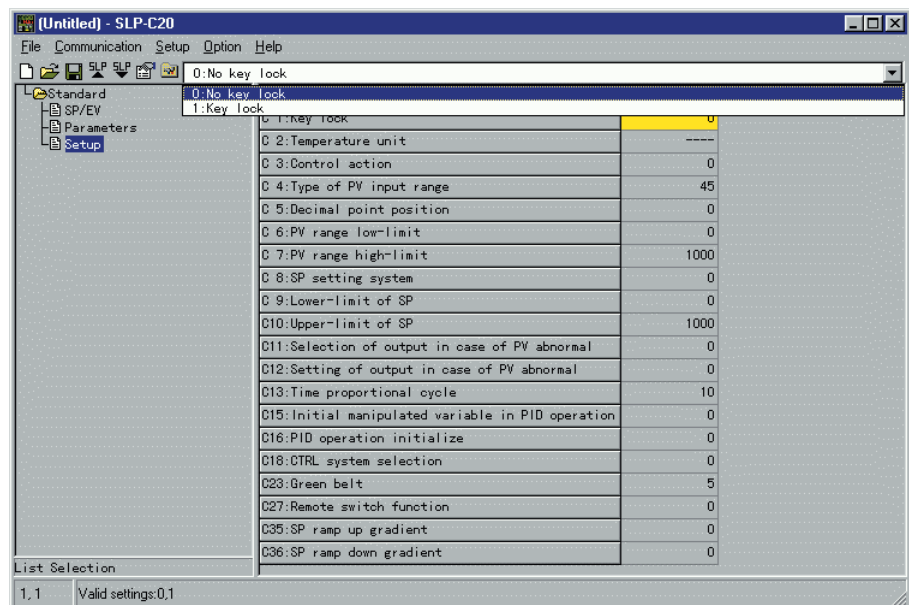
### Note

- Items that can be selected and entered are automatically displayed.

1. Press a setup item button.

The operation is the same by selecting the [Tab] or [Alt]+[↓] keys.

>>[Selection Item] is displayed.



2. Select the setup item by the mouse.

The operation is the same by selecting the [→], [←], [↑] or [↓]key, or the [Enter]key.

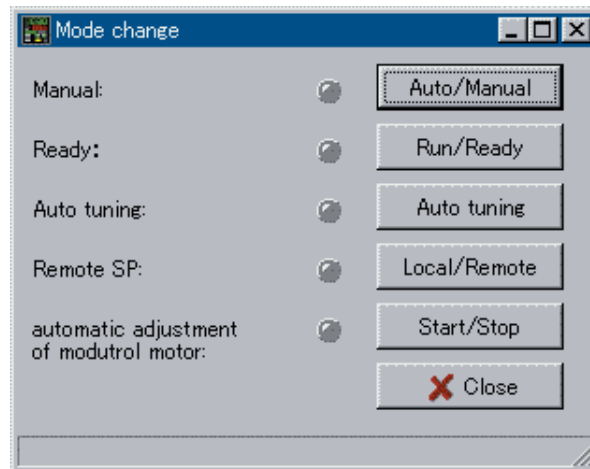
>>The set value is fixed.

### Note

- When you use the mouse, the set value is fixed at the same time that you select it with the mouse.

## 3 - 7 Mode Change (SLP-C30)

### ■ Change the mode of SDC30/31 (SLP-C30)



#### ● Change Auto/Manual

Click [Auto/Manual]button.

>>LED is lit when the controller is in manual operation.

#### ● Change Run/Ready

Click [Run/Ready]button.

>>LED is lit when the controller is in ready mode.

#### ● Start/Stop Auto tuning

Click [Auto tuning]button.

>>LED is lit when auto tuning is in operation.

#### ● Change Local SP/Remote SP

Click [Local/Remote]button.

>>LED is lit when the controller is in remote SP mode.

#### ● Start/Stop automatic adjustment of Modutrol motor

Click [Start/Stop]button.

>>LED is lit when modutrol motor automatic adjustment is in operation.

# Chapter 4. TROUBLESHOOTING

## ■ Communications error messages

| Category            | Message   | Description  | Remedy   |
|---------------------|---|--|--|
| Communication error | Time out.   | The message cannot be received within a period of the time-out time. An instrument other than SDC. The main unit is not connected. | Check the cable connections and contacts. Use the loader with it connected to SDC.         |
|                     | Cannot open communications port.                      | The communication port cannot be opened.   | Do not run the loader and other application using the communication port at the same time. |
|                     | Communications error has occurred.                    | The system error occurs.   | Re-operate or quit the loader to restart Windows.  |
| SDC status error    | Cannot support currently connected SDC20/21 SDC30/31. | The loader currently in use is not applicable to the version of the main unit.   | Contact Yamatake Corporation or its dealer.  |

## ■ File error messages

| Category               | Message  | Description  | Remedy   |
|------------------------|--|--|--|
| File name error        | This filename is not valid.  | An invalid file name is input.                     | Input a correct file name.                           |
|                        | This file cannot be found. Make sure that the correct path and filename are given. | A file name not existing is input.                 | Input an existing file name.                         |
|                        | This filename is a reserved device name. Use a different filename.                 | A file name reserved for the device name is input. | Input a correct file name.                           |
| Disk error             | Not enough free space on disk.   | The disk free capacity is insufficient.            | Keep a sufficient disk free capacity.                |
|                        | The device is not ready.   | The disk is not ready.                             | Prepare the disk and restart the operation.          |
|                        | Cannot make file.  | The CD-ROM is specified as save destination.       | Save the file to another directory.                  |
|                        | File name too long.  | The file name is too long.                         | Use 256 characters or less for the file name.        |
| Path name error        | The path does not exist. Make sure that the correct path is given.                 | An illegal path name is input.                     | Input a correct path name and restart the operation. |
| File information error | Illegal file size.   | The file is corrupted.                             | Corrupted file cannot be used.                       |
|                        | Illegal file information.  |  | Create a file again.                                 |

## ■ Startup error messages

| Category            | Message   | Description                                       | Remedy             |
|---------------------|---|---|--------------------|
| Loader system error | Can't start up two or more SLP-C20/C30 at once. | Two or more loaders are started at the same time. | Click [OK] button. |



# Revision History

| Printed Date | Manual Number | Edition     | Revised pages   | Description   |
|--------------|---------------|-------------|-----------------|---|
| 01-01        | CP-UM-5161E   | 1st Edition |                 |   |
| 04-05        |               | 2nd Edition | E2<br>E4<br>E13 | System environment Windows95/98 to Windows95/98/Me/2000/XP changed, Written method of operation changd. RESTRICTIONS ON USE changd. Note of Serial port added. Description changd of procedure 1. to 3. 3-4Operation Table to 3-4Menu Configuration List changed, Old J12 page. |
| 05-02        |               | 3rd Edition | E2              | Model No. and URL of USB adaptor changed.   |
|              |               |             |                 |   |





**YAMATAKE**

**Yamatake Corporation**  
**Advanced Automation Company**

Totate International Building  
2-12-19 Shibuya Shibuya-ku  
Tokyo 150-8316 Japan  
URL: <http://www.yamatake.com>

*This has been printed on recycled paper.* (02)

*Specifications are subject to change without notice.*

Printed in Japan.  
1st Edition: Issued in Jan., 2001(W)  
3rd Edition: Issued in Feb., 2005(W)